



United States Department of Agriculture  
Agricultural Marketing Service  
Dairy Programs  
Market Administrator

**Southeast Marketing Area  
Federal Order No. 7**

**2013 ANNUAL STATISTICS**

**Patrick S. Clark**  
Market Administrator  
1550 North Brown Road, Suite 120  
Lawrenceville, Georgia 30043  
[www.fmmlanta.com](http://www.fmmlanta.com)

# TABLE OF CONTENTS

Southeast Marketing Area Map .....	1
Receipts and Classification of Producer Milk .....	2
Receipts and Classification of Other Source Milk, Overages, and Opening Inventories .....	3
Classification of Total Receipts .....	4
Class I Utilization by Pool Handlers .....	5
Class I Packaged Products Distributed In and Out of Marketing Area .....	6
Class I Packaged Products Distributed In Marketing Area .....	6
Class I Utilization – Packaged Disposition by Product .....	7
Class II Utilization by Pool Handlers .....	8
Class III Utilization by Pool Handlers .....	9
Class IV Utilization by Pool Handlers .....	10
Announced Federal Order Class and Uniform Prices .....	11
NASS & AMS Dairy Product Price Averages Used In Federal Milk Order Price Formulas .....	12
Producer Milk and Number of Producers by State and County - May 2013 .....	13
Producer Milk and Number of Producers by State and County - December 2013 .....	19
Transportation Credit Balancing Fund Summary.....	25
2013 Pool Handlers .....	26
2013 Nonpool Handlers with Route Disposition in the Marketing Area .....	29

The data presented herein represents a compilation of general information pertaining to the marketing of milk in the Southeast Marketing Area during 2013. Except for the corrections of mathematical and other obvious errors, the data presented were taken from reports of receipts and utilization, payroll reports, and reports of nonpool handlers that were submitted to the office of the Market Administrator as well as publications released by this office.

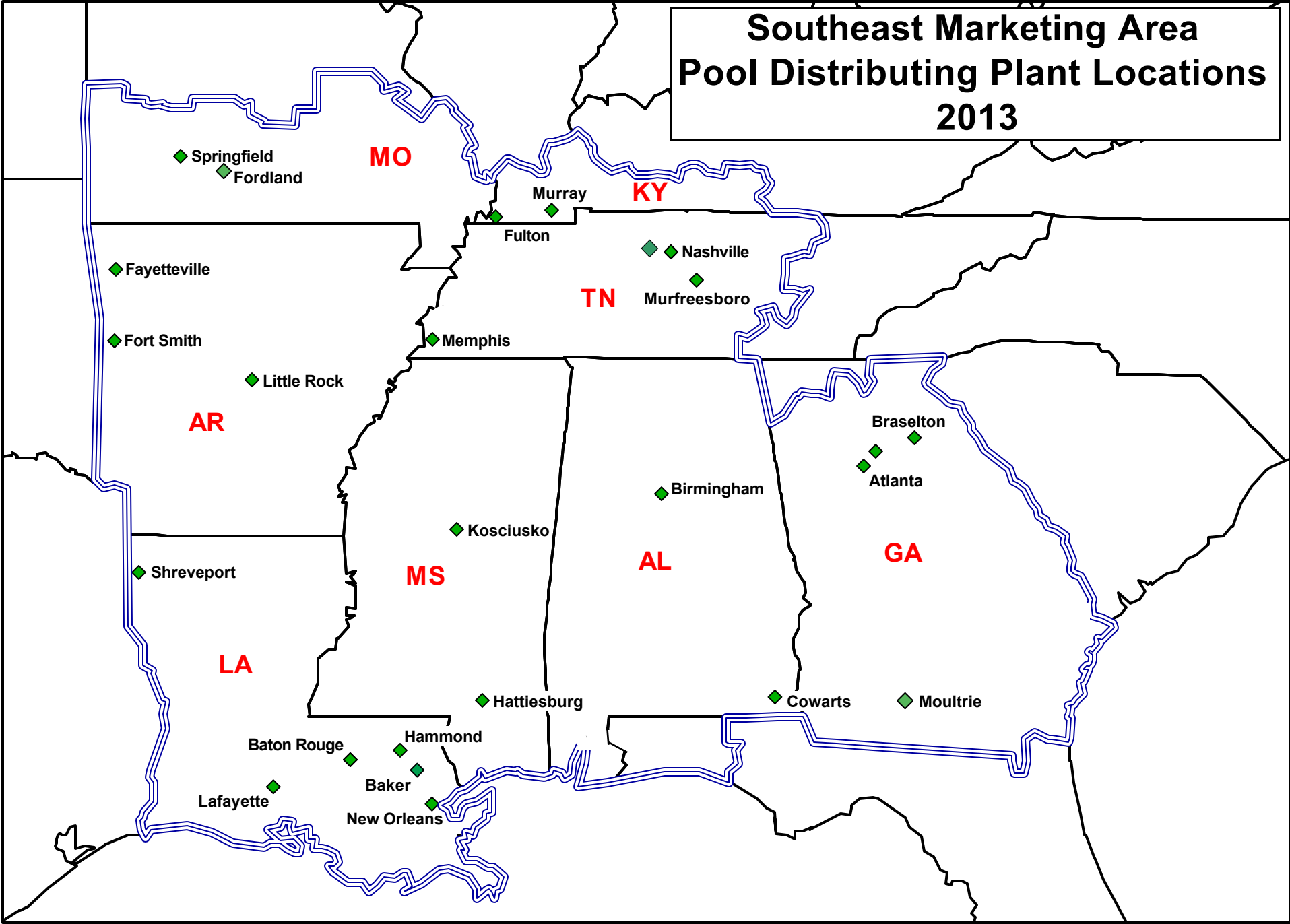
This information is prepared pursuant to Section §1000.25 (c)(8) of the General Provisions of Federal Milk Marketing Orders, Part 1000 which is incorporated by reference and made a part of Federal Order Number 7. Part 1000 states that the Market Administrator shall “Prepare and disseminate publicly for the benefit of producers, handlers, and consumers such statistics and other information concerning operation of the order and facts relevant to the provisions thereof (or proposed provisions) as do not reveal confidential information.”

## **Non-Discrimination Policy**

The U.S. Department of Agriculture (USDA) prohibits discrimination against its customers, employees, and applicants for employment on the bases of race, color, national origin, age, disability, sex, gender identity, religion, reprisal, and where applicable, political beliefs, marital status, familial or parental status, sexual orientation, or all or part of an individual's income is derived from any public assistance program, or protected genetic information in employment or in any program or activity conducted or funded by the Department. (Not all prohibited bases will apply to all programs and/or employment activities.)

If you wish to file an employment complaint, you must contact your agency's [EEO Counselor](#) (PDF) within 45 days of the date of the alleged discriminatory act, event, or in the case of a personnel action. Additional information can be found online at [http://www.ascr.usda.gov/complaint\\_filing\\_file.html](http://www.ascr.usda.gov/complaint_filing_file.html). If you wish to file a Civil Rights program complaint of discrimination, complete the [USDA Program Discrimination Complaint Form](#) (PDF), found online at [http://www.ascr.usda.gov/complaint\\_filing\\_cust.html](http://www.ascr.usda.gov/complaint_filing_cust.html), or at any USDA office, or call (866) 632-9992 to request the form. You may also write a letter containing all of the information requested in the form. Send your completed complaint form or letter to us by mail at U.S. Department of Agriculture, Director, Office of Adjudication, 1400 Independence Avenue, S.W., Washington, D.C. 20250-9410, by fax (202) 690-7442 or email at [program.intake@usda.gov](mailto:program.intake@usda.gov).

# Southeast Marketing Area Pool Distributing Plant Locations 2013



**SOUTHEAST MARKETING AREA  
FEDERAL ORDER NO. 7**

**RECEIPTS AND CLASSIFICATION OF PRODUCER MILK AND BUTTERFAT**

2013	CLASS I			CLASS II		
	PRODUCT POUNDS	%	BUTTERFAT POUNDS	PRODUCT POUNDS	%	BUTTERFAT POUNDS
January	398,844,268	68.78%	7,814,017	50,745,923	8.75%	5,254,946
February	342,552,097	66.40%	6,760,323	51,991,607	10.08%	4,618,237
March	357,120,575	64.64%	7,175,129	59,872,725	10.84%	5,483,762
April	359,143,504	65.20%	7,009,694	64,588,808	11.73%	6,181,002
May	338,884,122	64.25%	6,921,693	69,575,407	13.19%	6,041,565
June	294,321,231	56.24%	6,345,004	69,415,782	13.26%	5,675,957
July	324,966,449	68.05%	7,161,088	56,567,481	11.85%	5,042,643
August	359,390,515	72.29%	7,121,621	65,047,703	13.08%	6,084,218
September	332,018,529	69.71%	6,418,774	63,124,953	13.25%	5,590,352
October	360,942,312	72.41%	7,096,751	69,064,529	13.85%	6,163,104
November	341,531,669	77.13%	7,021,485	51,198,829	11.56%	5,043,300
December	353,247,655	72.50%	7,609,724	49,120,251	10.08%	4,668,169
<b>Total</b>	<b>4,162,962,926</b>	<b>67.92%</b>	<b>84,455,303</b>	<b>720,313,998</b>	<b>11.75%</b>	<b>65,847,255</b>

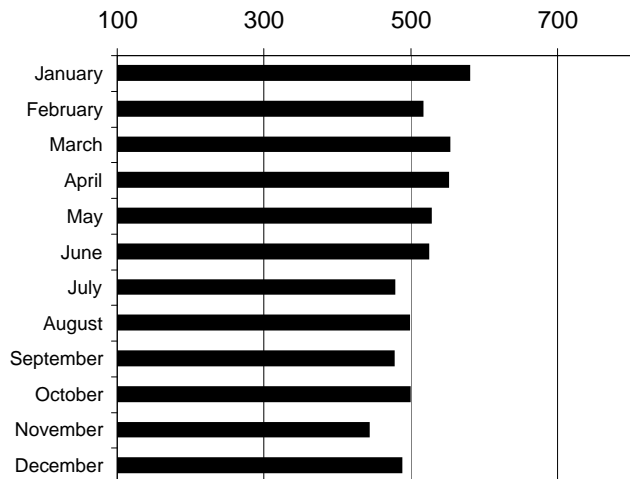
2013	CLASS III			CLASS IV		
	PRODUCT POUNDS	%	BUTTERFAT POUNDS	PRODUCT POUNDS	%	BUTTERFAT POUNDS
January	73,044,446	12.60%	3,537,672	57,237,813	9.87%	5,703,292
February	80,450,161	15.59%	3,821,879	40,905,675	7.93%	4,516,928
March	84,642,132	15.32%	3,416,635	50,853,027	9.20%	4,787,673
April	86,875,839	15.77%	3,806,530	40,248,069	7.31%	3,382,984
May	79,251,198	15.03%	3,273,570	39,695,120	7.53%	3,010,159
June	88,805,141	16.97%	3,469,058	70,821,917	13.53%	3,505,062
July	67,965,951	14.23%	2,837,914	28,008,780	5.87%	2,122,312
August	48,988,242	9.85%	2,506,704	23,740,445	4.78%	2,334,072
September	58,739,625	12.33%	2,785,707	22,375,961	4.70%	2,520,164
October	58,006,155	11.64%	2,888,500	10,481,631	2.10%	2,422,948
November	21,637,500	4.89%	1,556,398	28,413,261	6.42%	3,238,806
December	38,908,224	7.99%	2,224,243	45,940,796	9.43%	4,090,716
<b>Total</b>	<b>787,314,614</b>	<b>12.85%</b>	<b>36,124,810</b>	<b>458,722,495</b>	<b>7.48%</b>	<b>41,635,116</b>

**TOTAL PRODUCER RECEIPTS**

2013	PRODUCT POUNDS	%	BUTTERFAT POUNDS
January	579,872,450	100.00%	22,309,927
February	515,899,540	100.00%	19,717,367
March	552,488,459	100.00%	20,863,199
April	550,856,220	100.00%	20,380,210
May	527,405,847	100.00%	19,246,987
June	523,364,071	100.00%	18,995,081
July	477,508,661	100.00%	17,163,957
August	497,166,905	100.00%	18,046,615
September	476,259,068	100.00%	17,314,997
October	498,494,627	100.00%	18,571,303
November	442,781,259	100.00%	16,859,989
December	487,216,926	100.00%	18,592,852
<b>Total</b>	<b>6,129,314,033</b>	<b>100.00%</b>	<b>228,062,484</b>

Monthly Producer Receipts

Millions



**SOUTHEAST MARKETING AREA  
FEDERAL ORDER NO. 7**

**RECEIPTS AND CLASSIFICATION OF OTHER SOURCE MILK,  
OVERAGES, AND OPENING INVENTORIES**

<b>2013</b>	<b><u>OTHER SOURCE MILK</u></b>	<b><u>OVERAGES</u></b>	<b><u>OPENING INVENTORIES</u></b>	<b><u>TOTAL</u></b>
January	28,689,038	6,064	41,613,852	70,308,954
February	25,865,724	28,154	45,231,686	71,125,564
March	29,352,814	0	42,780,227	72,133,041
April	33,691,071	680	49,533,066	83,224,817
May	31,189,098	15,248	45,584,447	76,788,793
June	22,735,889	267,194	36,899,365	59,902,448
July	20,926,402	192,415	44,831,258	65,950,075
August	24,875,971	2,918	40,184,573	65,063,462
September	27,986,885	15,863	39,546,526	67,549,274
October	26,572,114	48,652	44,749,175	71,369,941
November	16,037,971	10,967	40,057,826	56,106,764
December	28,962,086	83,924	38,687,530	67,733,540
<b>Total</b>	<b>316,885,063</b>	<b>672,079</b>	<b>509,699,531</b>	<b>827,256,673</b>

<b>2013</b>	<b><u>CLASS I</u></b>	<b><u>CLASS II</u></b>	<b><u>CLASS III</u></b>	<b><u>CLASS IV</u></b>
January	29,590,604	10,389,159	1,213,605	29,115,586
February	36,662,980	6,904,656	2,649,021	24,908,907
March	34,690,229	10,063,491	3,299,211	24,080,110
April	27,939,653	9,951,264	13,862,891	31,471,009
May	31,596,700	14,309,919	10,837,196	20,044,978
June	29,539,916	8,383,634	1,652,245	20,326,653
July	25,147,546	11,447,878	6,018,778	23,335,873
August	29,378,456	10,532,026	6,165,077	18,987,903
September	37,742,266	7,022,759	2,154,832	20,629,417
October	33,064,337	11,551,101	4,730,925	22,023,578
November	31,354,905	2,627,266	1,795,448	20,329,145
December	28,394,555	11,990,462	728,722	26,619,801
<b>Total</b>	<b>375,102,147</b>	<b>115,173,615</b>	<b>55,107,951</b>	<b>281,872,960</b>

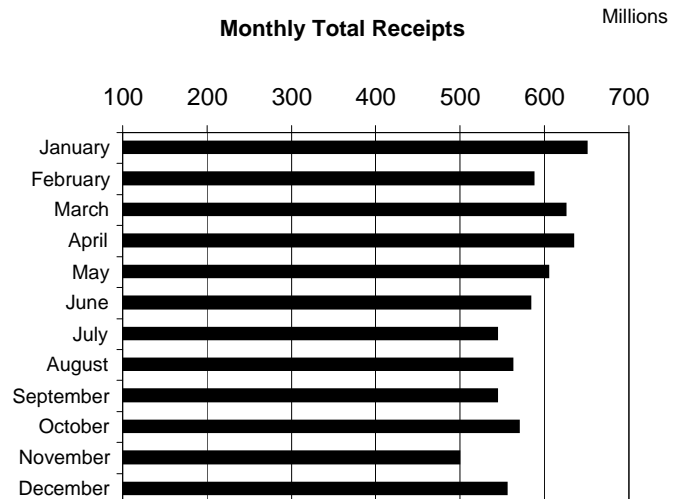
**SOUTHEAST MARKETING AREA  
FEDERAL ORDER NO. 7**

**CLASSIFICATION OF TOTAL RECEIPTS**

2013	CLASS I			CLASS II		
	PRODUCT POUNDS	BUTTERFAT POUNDS	BUTTERFAT TEST	PRODUCT POUNDS	BUTTERFAT POUNDS	BUTTERFAT TEST
January	428,434,872	8,390,072	1.96%	61,135,082	7,393,565	12.09%
February	379,215,077	7,425,787	1.96%	58,896,263	6,729,033	11.43%
March	391,810,804	7,810,946	1.99%	69,936,216	8,124,805	11.62%
April	387,083,157	7,539,766	1.95%	74,540,072	8,702,989	11.68%
May	370,480,822	7,506,327	2.03%	83,885,326	8,777,225	10.46%
June	323,861,147	6,935,931	2.14%	77,799,416	8,147,541	10.47%
July	350,113,995	7,651,134	2.19%	68,015,359	7,972,704	11.72%
August	388,768,971	7,703,464	1.98%	75,579,729	8,685,507	11.49%
September	369,760,795	7,108,106	1.92%	70,147,712	7,622,894	10.87%
October	394,006,649	7,742,611	1.97%	80,615,630	8,757,335	10.86%
November	372,886,574	7,709,728	2.07%	53,826,095	5,044,250	9.37%
December	381,642,210	8,213,468	2.15%	61,110,713	7,722,004	12.64%
<b>Total</b>	<b>4,538,065,073</b>	<b>91,737,340</b>	<b>2.02%</b>	<b>835,487,613</b>	<b>93,679,852</b>	<b>11.21%</b>

2013	CLASS III			CLASS IV		
	PRODUCT POUNDS	BUTTERFAT POUNDS	BUTTERFAT TEST	PRODUCT POUNDS	BUTTERFAT POUNDS	BUTTERFAT TEST
January	74,258,051	3,579,812	4.82%	86,353,399	10,465,329	12.12%
February	83,099,182	3,891,398	4.68%	65,814,582	8,457,106	12.85%
March	87,941,343	3,522,917	4.01%	74,933,137	8,186,199	10.92%
April	100,738,730	3,990,188	3.96%	71,719,078	6,561,251	9.15%
May	90,088,394	3,377,518	3.75%	59,740,098	5,287,789	8.85%
June	90,457,386	3,636,165	4.02%	91,148,570	4,500,720	4.94%
July	73,984,729	2,934,149	3.97%	51,344,653	3,369,756	6.56%
August	55,153,319	2,637,074	4.78%	42,728,348	3,427,416	8.02%
September	60,894,457	2,864,129	4.70%	43,005,378	3,740,496	8.70%
October	62,737,080	2,953,826	4.71%	32,505,209	3,824,945	11.77%
November	23,432,948	1,557,102	6.64%	48,742,406	4,863,138	9.98%
December	39,636,946	2,250,342	5.68%	72,560,597	7,818,082	10.77%
<b>Total</b>	<b>842,422,565</b>	<b>37,194,620</b>	<b>4.42%</b>	<b>740,595,455</b>	<b>70,502,227</b>	<b>9.52%</b>

2013	TOTAL RECEIPTS		
	PRODUCT POUNDS	BUTTERFAT POUNDS	BUTTERFAT TEST
January	650,181,404	29,828,778	4.59%
February	587,025,104	26,503,324	4.51%
March	624,621,500	27,644,867	4.43%
April	634,081,037	26,794,194	4.23%
May	604,194,640	24,948,859	4.13%
June	583,266,519	23,220,357	3.98%
July	543,458,736	21,927,743	4.03%
August	562,230,367	22,453,461	3.99%
September	543,808,342	21,335,625	3.92%
October	569,864,568	23,278,717	4.08%
November	498,888,023	19,174,218	3.84%
December	554,950,466	26,003,896	4.69%
<b>Total</b>	<b>6,956,570,706</b>	<b>293,114,039</b>	<b>4.21%</b>



**SOUTHEAST MARKETING AREA  
FEDERAL ORDER NO. 7**

**TOTAL CLASS I UTILIZATION BY POOL HANDLERS**

<b>2013</b>	<b>TOTAL CLASS I ROUTE DISPOSITION</b>	<b>TRANSFERRED OR DIVERTED TO NONPOOL PLANTS</b>	<b>ENDING INVENTORY</b>	<b>CLASS I SHRINKAGE</b>
January	388,934,014	8,705,939	27,492,414	3,302,505
February	340,515,764	8,243,197	27,479,803	2,976,313
March	360,025,332	8,882,716	20,509,002	2,393,754
April	347,325,691	11,435,685	26,007,994	2,313,787
May	336,406,767	8,160,138	24,632,018	1,281,899
June	296,286,703	8,130,723	18,317,670	1,126,051
July	320,061,287	7,917,867	20,063,727	2,071,114
August	353,158,491	9,854,428	23,959,777	1,796,275
September	334,588,556	9,893,940	22,817,096	2,461,203
October	355,090,031	9,446,273	26,918,618	2,551,727
November	341,066,600	7,484,656	22,007,427	2,327,891
December	341,474,341	10,583,899	26,377,835	3,206,135
<b>Total</b>	<b>4,114,933,577</b>	<b>108,739,461</b>	<b>286,583,381</b>	<b>27,808,654</b>

**TOTAL CLASS I UTILIZATION**

<b>2013</b>	<b>PRODUCT POUNDS</b>	<b>BUTTERFAT POUNDS</b>	<b>BUTTERFAT TEST</b>	<b>DAILY AVERAGE UTILIZATION</b>
January	428,434,872	8,390,072	1.96%	13,820,480
February	379,215,077	7,425,787	1.96%	13,543,396
March	391,810,804	7,810,946	1.99%	12,639,058
April	387,083,157	7,539,766	1.95%	12,902,772
May	370,480,822	7,506,327	2.03%	11,950,994
June	323,861,147	6,935,931	2.14%	10,795,372
July	350,113,995	7,651,134	2.19%	11,294,000
August	388,768,971	7,703,464	1.98%	12,540,935
September	369,760,795	7,108,106	1.92%	12,325,360
October	394,006,649	7,742,611	1.97%	12,709,892
November	372,886,574	7,709,728	2.07%	12,429,552
December	381,642,210	8,213,468	2.15%	12,311,039
<b>Total</b>	<b>4,538,065,073</b>	<b>91,737,340</b>	<b>2.02%</b>	<b>12,433,055</b>

**Southeast Marketing Area - Federal Order 7**

**CLASS I PACKAGED ROUTE DISPOSITION IN AND OUT OF MARKETING AREA BY POOL PLANTS**

	<u>In Area</u>		<u>Out of Area</u>		<u>Total Pounds</u>
	<u>Pounds</u>	<u>Percent</u>	<u>Pounds</u>	<u>Percent</u>	
<b>2013</b>					
January	343,503,436	88.32%	45,430,578	11.68%	388,934,014
February	299,399,030	87.93%	41,116,734	12.07%	340,515,764
March	317,279,771	88.13%	42,745,561	11.87%	360,025,332
April	307,856,784	88.64%	39,468,907	11.36%	347,325,691
May	299,853,207	89.13%	36,553,560	10.87%	336,406,767
June	262,707,472	88.67%	33,579,231	11.33%	296,286,703
July	283,271,690	88.51%	36,789,597	11.49%	320,061,287
August	313,802,613	88.86%	39,355,878	11.14%	353,158,491
September	297,498,592	88.91%	37,089,964	11.09%	334,588,556
October	315,928,596	88.97%	39,161,435	11.03%	355,090,031
November	307,198,786	90.07%	33,867,814	9.93%	341,066,600
December	303,114,267	88.77%	38,360,074	11.23%	341,474,341
<b>Total</b>	<b><u>3,651,414,244</u></b>	<b><u>88.74%</u></b>	<b><u>463,519,333</u></b>	<b><u>11.26%</u></b>	<b><u>4,114,933,577</u></b>
<b>Average</b>	<b><u>304,284,520</u></b>		<b><u>38,626,611</u></b>		<b><u>342,911,131</u></b>

9

**CLASS I PACKAGED ROUTE DISPOSITION IN MARKETING AREA BY POOL PLANTS AND NONPOOL PLANTS**

	<u>Pool Plants</u>		<u>Nonpool Plants</u>		<u>Total Pounds</u>
	<u>Pounds</u>	<u>Percent</u>	<u>Pounds</u>	<u>Percent</u>	
<b>2013</b>					
January	343,503,436	81.11%	80,003,420	18.89%	423,506,856
February	299,399,030	80.76%	71,326,333	19.24%	370,725,363
March	317,279,771	80.11%	78,776,253	19.89%	396,056,024
April	307,856,784	79.03%	81,681,252	20.97%	389,538,036
May	299,853,207	78.88%	80,271,440	21.12%	380,124,647
June	262,707,472	77.72%	75,322,144	22.28%	338,029,616
July	283,271,690	77.51%	82,169,712	22.49%	365,441,402
August	313,802,613	77.76%	89,772,845	22.24%	403,575,458
September	297,498,592	77.17%	88,033,105	22.83%	385,531,697
October	315,928,596	77.22%	93,214,315	22.78%	409,142,911
November	307,198,786	77.16%	90,944,843	22.84%	398,143,629
December	303,114,267	77.55%	87,756,719	22.45%	390,870,986
<b>Total</b>	<b><u>3,651,414,244</u></b>	<b><u>78.51%</u></b>	<b><u>999,272,381</u></b>	<b><u>21.49%</u></b>	<b><u>4,650,686,625</u></b>
<b>Average</b>	<b><u>304,284,520</u></b>		<b><u>83,272,698</u></b>		<b><u>387,557,219</u></b>



**Southeast Marketing Area - Federal Order 7**

**CLASS I PACKAGED ROUTE DISPOSITION BY PRODUCT**

	<b>Whole</b>	<b>Reduced Fat 2%</b>	<b>Lowfat 1%</b>	<b>Fat Free</b>	<b>Flavored Milk and Drinks 1/</b>	<b>Organic Milk 2/</b>	<b>Buttermilk</b>	<b>Total Packaged Class I</b>
<b>2013</b>								
January	117,138,693	136,305,110	41,366,857	41,710,369	43,214,831	1,610,184	7,587,970	388,934,014
February	101,620,478	118,279,664	36,587,107	37,044,714	38,845,644	1,437,602	6,700,555	340,515,764
March	108,679,797	127,099,467	37,965,774	39,636,987	37,908,363	1,563,959	7,170,985	360,025,332
April	101,932,018	119,060,340	38,434,138	37,801,025	41,783,147	1,554,983	6,760,040	347,325,691
May	104,332,060	120,922,722	34,306,144	36,096,940	32,319,101	1,559,708	6,870,092	336,406,767
June	98,686,996	114,706,765	27,340,662	32,661,899	15,369,824	1,418,295	6,102,262	296,286,703
July	107,968,053	124,706,100	28,677,779	33,621,953	16,694,914	1,509,179	6,883,309	320,061,287
August	107,745,298	126,654,384	36,446,611	37,099,893	36,562,448	1,745,095	6,904,762	353,158,491
September	97,900,175	114,359,586	37,109,677	33,989,997	42,991,249	1,733,724	6,504,148	334,588,556
October	104,905,782	121,760,404	38,250,694	35,779,421	45,495,317	1,655,177	7,243,236	355,090,031
November	104,621,115	119,163,331	34,183,358	33,728,368	38,783,876	1,669,853	8,916,699	341,066,600
December	108,359,667	123,026,619	32,058,354	33,003,500	36,356,962	1,844,877	6,824,362	341,474,341
<b>Total</b>	<b>1,263,890,132</b>	<b>1,466,044,492</b>	<b>422,727,155</b>	<b>432,175,066</b>	<b>426,325,676</b>	<b>19,302,636</b>	<b>84,468,420</b>	<b>4,114,933,577</b>
<b>Average</b>	<b>105,324,178</b>	<b>122,170,374</b>	<b>35,227,263</b>	<b>36,014,589</b>	<b>35,527,140</b>	<b>1,608,553</b>	<b>7,039,035</b>	<b>342,911,131</b>

1 / Includes Eggnog

2 / Includes Whole, Reduced Fat, Low Fat, and Flavored Organic milk products.

**SOUTHEAST MARKETING AREA  
FEDERAL ORDER NO. 7**

**TOTAL CLASS II UTILIZATION BY POOL HANDLERS**

<b>2013</b>	<b><u>NONFLUID USED TO PRODUCE</u></b>	<b><u>SHRINKAGE 1/</u></b>	<b><u>TRANSFERRED OR DIVERTED TO NONPOOL PLANTS</u></b>	<b><u>USED TO PRODUCE 2/ &amp; OTHER USES 3/</u></b>
January	1,893,795	1,471	31,832,485	27,407,331
February	1,748,744	4,178	32,031,232	25,112,109
March	2,485,481	1,285	38,611,693	28,837,757
April	2,183,770	932	42,778,507	29,576,863
May	2,553,678	6,707,521	42,512,689	32,111,438
June	2,457,691	5,374	46,234,561	29,101,790
July	2,575,626	171,722	33,963,092	31,304,919
August	2,362,791	4,960	43,442,015	29,769,963
September	2,786,279	397	39,975,465	27,385,571
October	2,909,149	0	47,527,555	30,178,926
November	1,999,215	324	39,509,073	12,317,483
December	2,117,295	0	29,283,408	29,710,010
<b>Total</b>	<b>28,073,514</b>	<b>6,898,164</b>	<b>467,701,775</b>	<b>332,814,160</b>

**TOTAL CLASS II UTILIZATION**

<b>2013</b>	<b><u>PRODUCT POUNDS</u></b>	<b><u>BUTTERFAT POUNDS</u></b>	<b><u>BUTTERFAT TEST</u></b>	<b><u>DAILY UTILIZATION</u></b>
January	61,135,082	7,393,565	12.09%	1,972,099
February	58,896,263	6,729,033	11.43%	2,103,438
March	69,936,216	8,124,805	11.62%	2,256,007
April	74,540,072	8,702,989	11.68%	2,484,669
May	83,885,326	8,777,225	10.46%	2,705,978
June	77,799,416	8,147,541	10.47%	2,593,314
July	68,015,359	7,972,704	11.72%	2,194,044
August	75,579,729	8,685,507	11.49%	2,438,056
September	70,147,712	7,622,894	10.87%	2,338,257
October	80,615,630	8,757,335	10.86%	2,600,504
November	53,826,095	5,044,250	9.37%	1,794,203
December	61,110,713	7,722,004	12.64%	1,971,313
<b>Total</b>	<b>835,487,613</b>	<b>93,679,852</b>	<b>11.21%</b>	<b>2,289,007</b>

- 1/ Pursuant § 1000.43 (b) (1). Assigned to lowest priced class.
- 2/ Pursuant § 1000.40 (b). Used to Produce assigned to Class II.
- 3/ Pursuant § 1000.40 (e). Other Uses assigned to lowest priced class.

**SOUTHEAST MARKETING AREA  
FEDERAL ORDER NO. 7**

**TOTAL CLASS III UTILIZATION BY POOL HANDLERS**

<b>2013</b>	<b><u>SHRINKAGE 1/</u></b>	<b><u>TRANSFERRED OR DIVERTED TO NONPOOL PLANTS &amp; USED TO PRODUCE</u></b>	<b><u>USED TO PRODUCE &amp; OTHER USES 2/ 3/</u></b>
January	0	74,258,051	0
February	5,316,386	74,149,617	3,633,179
March	6,203,500	78,376,341	3,361,502
April	6,634,118	90,562,047	3,542,565
May	0	90,088,394	0
June	5,223,479	82,299,863	2,934,044
July	5,132,564	65,579,537	3,272,628
August	6,525,144	45,690,647	2,937,528
September	5,795,054	51,576,199	3,523,204
October	5,982,299	53,210,574	3,544,207
November	5,646,290	14,305,299	3,481,359
December	6,104,523	29,374,243	4,158,180
<b>Total</b>	<b>58,563,357</b>	<b>749,470,812</b>	<b>34,388,396</b>

**TOTAL CLASS III UTILIZATION**

<b>2013</b>	<b><u>PRODUCT POUNDS</u></b>	<b><u>BUTTERFAT POUNDS</u></b>	<b><u>BUTTERFAT TEST</u></b>	<b><u>DAILY AVERAGE UTILIZATION</u></b>
January	74,258,051	3,579,812	4.82%	2,395,421
February	83,099,182	3,628,833	4.66%	2,779,793
March	87,941,343	3,522,917	4.01%	2,836,818
April	100,738,730	3,990,188	3.96%	3,357,958
May	90,088,394	3,377,518	3.75%	2,906,077
June	90,457,386	3,636,165	4.02%	3,015,246
July	73,984,729	2,934,149	3.97%	2,386,604
August	55,153,319	2,637,074	4.78%	1,779,139
September	60,894,457	2,864,129	4.70%	2,029,815
October	62,737,080	2,953,826	4.71%	2,023,777
November	23,432,948	1,557,102	6.64%	781,098
December	39,636,946	2,250,342	5.68%	1,278,611
<b>Total</b>	<b>842,422,565</b>	<b>36,932,055</b>	<b>4.38%</b>	<b>2,308,007</b>

- 1/** Pursuant § 1000.43 (b) (1). Assigned to lowest priced class.
- 2/** Pursuant § 1000.40 (c). Used to Produce assigned to Class III.
- 3/** Pursuant § 1000.40 (e). Other Uses assigned to lowest priced class.

**SOUTHEAST MARKETING AREA  
FEDERAL ORDER NO. 7**

**TOTAL CLASS IV UTILIZATION BY POOL HANDLERS**

<b>2013</b>	<b>ENDING INVENTORY</b>	<b>NONFLUID USED TO FORTIFY</b>	<b>SHRINKAGE 1/</b>	<b>TRANSFERRED OR DIVERTED TO NONPOOL PLANTS</b>	<b>USED TO PRODUCE/ 2/ OTHER USES 3/</b>
January	17,373,540	1,210,318	6,566,802	56,329,139	4,873,600
February	15,248,294	1,148,515	24,381	49,393,392	0
March	26,646,805	1,207,013	717	47,078,602	0
April	20,385,603	1,244,532	769,942	49,319,001	0
May	12,162,744	1,194,035	397,440	45,985,879	0
June	26,511,144	1,026,569	0	63,610,857	0
July	20,127,144	1,209,326	0	30,008,183	0
August	15,488,933	1,243,955	338	25,995,122	0
September	21,751,754	1,100,891	0	20,152,733	0
October	16,185,167	1,670,536	0	14,649,506	0
November	14,323,685	2,300,675	108,692	32,009,354	0
December	17,457,103	3,207,631	1,000	51,894,863	0
<b>Total</b>	<b>223,661,916</b>	<b>17,763,996</b>	<b>7,869,312</b>	<b>486,426,631</b>	<b>4,873,600</b>

**TOTAL CLASS IV UTILIZATION**

<b>2013</b>	<b>PRODUCT POUNDS</b>	<b>BUTTERFAT POUNDS</b>	<b>BUTTERFAT TEST</b>	<b>DAILY UTILIZATION</b>
January	86,353,399	10,465,329	12.12%	2,785,594
February	65,814,582	8,457,106	12.85%	2,350,521
March	74,933,137	8,186,199	10.92%	2,417,198
April	71,719,078	6,561,251	9.15%	2,390,636
May	59,740,098	5,287,789	8.85%	1,927,100
June	91,148,570	4,500,720	4.94%	3,038,286
July	51,344,653	3,369,756	6.56%	1,656,279
August	42,728,348	3,427,416	8.02%	1,378,334
September	43,005,378	3,740,496	8.70%	1,433,513
October	32,505,209	3,824,945	11.77%	1,048,555
November	48,742,406	4,863,138	9.98%	1,624,747
December	72,560,597	7,818,082	10.77%	2,340,664
<b>Total</b>	<b>740,595,455</b>	<b>70,502,227</b>	<b>9.52%</b>	<b>2,029,029</b>

**1/** Pursuant § 1000.43 (b) (1). Assigned to lowest priced class.

**2/** Pursuant § 1000.40 (d). Used to Produce assigned to Class IV.

**3/** Pursuant § 1000.40 (e). Other Uses assigned to lowest priced class.

**SOUTHEAST MARKETING AREA  
FEDERAL ORDER NO. 7  
ANNOUNCED FEDERAL ORDER CLASS & UNIFORM PRICES**

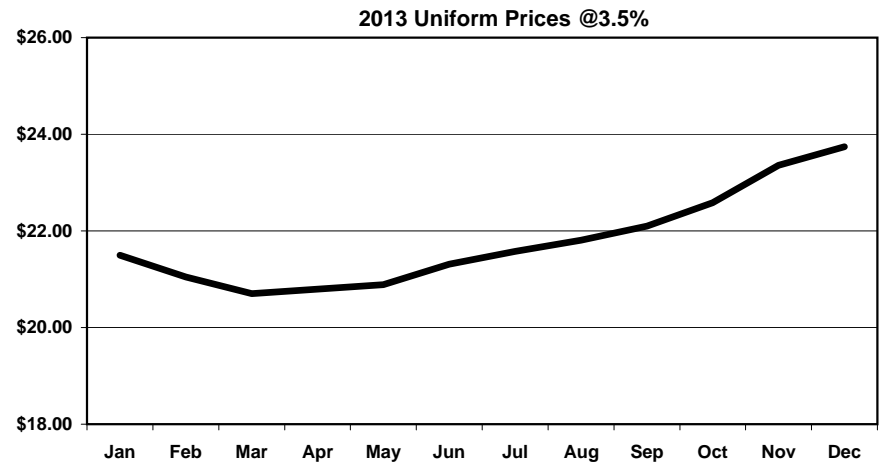
<b>CLASS I*</b>			
<b>2013</b>	<b>Skim</b>	<b>Butterfat</b>	<b>Milk @ 3.5%</b>
January	\$17.13	\$1.7832	\$22.77
February	\$16.71	\$1.6807	\$22.01
March	\$16.24	\$1.6944	\$21.60
April	\$15.87	\$1.7569	\$21.46
May	\$15.69	\$1.8335	\$21.56
June	\$16.89	\$1.8380	\$22.73
July	\$17.30	\$1.7183	\$22.71
August	\$17.57	\$1.6349	\$22.68
September	\$18.06	\$1.5800	\$22.96
October	\$18.35	\$1.5107	\$23.00
November	\$18.66	\$1.7135	\$24.00
December	\$19.11	\$1.6366	\$24.17
<b>Average</b>	<b>\$17.30</b>	<b>\$1.6984</b>	<b>\$22.64</b>

<b>CLASS II</b>			
<b>2013</b>	<b>Skim</b>	<b>Butterfat</b>	<b>Milk @ 3.5%</b>
January	\$12.96	\$1.6238	\$18.19
February	\$13.11	\$1.6689	\$18.49
March	\$13.14	\$1.7546	\$18.82
April	\$12.77	\$1.8297	\$18.73
May	\$12.59	\$1.7954	\$18.43
June	\$13.79	\$1.6669	\$19.14
July	\$14.20	\$1.5763	\$19.22
August	\$14.47	\$1.5174	\$19.27
September	\$14.96	\$1.5266	\$19.78
October	\$15.25	\$1.6708	\$20.56
November	\$15.56	\$1.6406	\$20.76
December	<u>\$16.01</u>	<u>\$1.7742</u>	<u>\$21.66</u>
<b>Average</b>	<b>\$14.07</b>	<b>\$1.6704</b>	<b>\$19.42</b>

<b>CLASS III</b>			
<b>2013</b>	<b>Skim</b>	<b>Butterfat</b>	<b>Milk @ 3.5%</b>
January	\$12.93	\$1.6168	\$18.14
February	\$11.85	\$1.6619	\$17.25
March	\$11.21	\$1.7476	\$16.93
April	\$11.62	\$1.8227	\$17.59
May	\$12.71	\$1.7884	\$18.52
June	\$12.65	\$1.6599	\$18.02
July	\$12.32	\$1.5693	\$17.38
August	\$13.08	\$1.5104	\$17.91
September	\$13.29	\$1.5196	\$18.14
October	\$12.85	\$1.6638	\$18.22
November	\$13.59	\$1.6336	\$18.83
December	\$13.23	\$1.7672	\$18.95
<b>Average</b>	<b>\$12.61</b>	<b>\$1.6634</b>	<b>\$17.99</b>

<b>CLASS IV</b>			
<b>2013</b>	<b>Skim</b>	<b>Butterfat</b>	<b>Milk @ 3.5%</b>
January	\$12.41	\$1.6168	\$17.63
February	\$12.37	\$1.6619	\$17.75
March	\$12.06	\$1.7476	\$17.75
April	\$12.15	\$1.8227	\$18.10
May	\$13.09	\$1.7884	\$18.89
June	\$13.54	\$1.6599	\$18.88
July	\$13.89	\$1.5693	\$18.90
August	\$14.28	\$1.5104	\$19.07
September	\$14.62	\$1.5196	\$19.43
October	\$14.87	\$1.6638	\$20.17
November	\$15.34	\$1.6336	\$20.52
December	\$15.91	\$1.7672	\$21.54
<b>Average</b>	<b>\$13.71</b>	<b>\$1.6634</b>	<b>\$19.05</b>

<b>UNIFORM*</b>			
<b>2013</b>	<b>Skim</b>	<b>Butterfat</b>	<b>Milk @ 3.5%</b>
January	\$16.20	\$1.6749	\$21.50
February	\$15.76	\$1.6682	\$21.05
March	\$15.18	\$1.7294	\$20.70
April	\$15.02	\$1.8004	\$20.80
May	\$15.10	\$1.8050	\$20.89
June	\$15.85	\$1.7198	\$21.31
July	\$16.44	\$1.6313	\$21.57
August	\$16.94	\$1.5599	\$21.81
September	\$17.31	\$1.5423	\$22.10
October	\$17.58	\$1.6056	\$22.58
November	\$18.16	\$1.6668	\$23.36
December	\$18.39	\$1.7133	\$23.74
<b>Average</b>	<b>\$16.49</b>	<b>\$1.6764</b>	<b>\$21.78</b>



\* Class 1 and Uniform Prices are at Fulton County (Atlanta), Georgia

**SOUTHEAST MARKETING AREA  
FEDERAL ORDER NO. 7**

Agricultural Marketing Service Class and Component Prices

**Dairy Products Price Averages Used in Federal Milk Order Price Formulas, 2013**

Month	Product Price Averages For:							
	Class I (Skim, Bfat.), Class II (Skim, Nonfat Solids)				Class II (Bfat.), Class III, Class IV, Components			
	Butter	Nonfat Dry Milk	Cheese	Dry Whey	Butter	Nonfat Dry Milk	Cheese	Dry Whey
	Dollars per pound				Dollars per pound			
Jan	1.6126	1.5442	1.825	0.6588	1.5066	1.5601	1.7485	0.6503
Feb	1.5280	1.5603	1.7535	0.6536	1.5438	1.5559	1.6623	0.6393
Mar	1.5393	1.5644	1.6480	0.6399	1.6146	1.5208	1.6467	0.6048
Apr	1.5909	1.5219	1.6402	0.6094	1.6766	1.5312	1.731	0.5741
May	1.6542	1.5021	1.6803	0.5797	1.6483	1.6374	1.8274	0.5765
Jun	1.6579	1.6367	1.8388	0.5741	1.5422	1.6878	1.781	0.5738
Jul	1.5590	1.6826	1.7806	0.5710	1.4674	1.7272	1.7142	0.5804
Aug	1.4902	1.7131	1.7201	0.5769	1.4187	1.7706	1.7731	0.5778
Sep	1.4448	1.7679	1.7778	0.5752	1.4263*	1.8085*	1.7961*	0.5791*
Oct	1.3876	1.8008	1.7739	0.5791	1.5454*	1.8366*	1.8025*	0.5731*
Nov	1.5551*	1.8358*	1.7938*	0.5757*	1.5205	1.8892	1.8612	0.5831
Dec	1.4916	1.8856	1.8774	0.5749	1.6308	1.9537	1.8761	0.5706
Avg	1.5426	1.6680	1.7591	0.5974	1.5451	1.7066	1.7683	0.5902

\* Pricing constituent used in calculation. Equivalent Prices, computed pursuant to 7 CFR, Section 1000.54 (<http://www.fmma30.com/>).

**Producer Milk By County/State  
(More Than Two Producers Per County)**

Federal Order No. 7

May 2013

State & County Name	County Code	No. Farms	Total Pounds
<b>Alabama</b>			
County Name	Code	No. Farms	Total Pounds
Cullman	43	5	999,619
Fayette	57	3	680,067
Hale	65	3	500,702
Morgan	103	3	1,958,045
Restricted	999	32	7,238,878
<b>Total for Alabama</b>		<b>46</b>	<b>11,377,311</b>

County Name	Code	No. Farms	Total Pounds
<b>Arkansas</b>			
County Name	Code	No. Farms	Total Pounds
Benton	7	14	1,986,758
Boone	9	3	99,038
Carroll	15	5	437,387
Conway	29	3	747,019
Franklin	47	6	543,609
Fulton	49	4	334,750
Logan	83	4	326,510
Lonoke	85	4	886,825
Madison	87	6	543,711
Searcy	129	3	134,601
Washington	143	10	946,753
White	145	4	479,101
Restricted	999	15	1,638,830
<b>Total for Arkansas</b>		<b>81</b>	<b>9,104,892</b>

County Name	Code	No. Farms	Total Pounds
<b>Florida</b>			
County Name	Code	No. Farms	Total Pounds
Jackson	63	4	609,144
Jefferson	65	3	7,489,599
Washington	133	3	152,657
Restricted	999	14	7,467,631
<b>Total for Florida</b>		<b>24</b>	<b>15,719,031</b>

County Name	Code	No. Farms	Total Pounds
<b>Georgia</b>			
County Name	Code	No. Farms	Total Pounds
Brooks	27	4	7,109,427
Burke	33	5	2,239,312
Greene	133	13	4,716,069
Houston	153	3	519,596
Jasper	159	3	419,318
Macon	193	30	24,407,158
Morgan	211	14	4,074,101
Putnam	237	26	4,992,379
Sumter	261	3	1,121,806

**Producer Milk By County/State  
(More Than Two Producers Per County)**

Federal Order No. 7

May 2013

<b>State &amp; County Name</b>	<b>County Code</b>	<b>No. Farms</b>	<b>Total Pounds</b>
Taliaferro	265	5	830,706
Tift	277	4	1,522,223
Wilkes	317	4	385,596
Restricted	999	67	27,246,069
<b>Total for Georgia</b>		<b>181</b>	<b>79,583,760</b>

**Illinois**

**Restricted**

**Indiana**

<b>County Name</b>	<b>Code</b>	<b>No. Farms</b>	<b>Total Pounds</b>
Daviess	27	6	201,666
Dubois	37	4	3,123,640
Gibson	51	8	4,857,861
Jasper	73	4	6,953,835
Lagrange	87	5	13,952
La porte	91	4	243,313
Newton	111	7	14,408,388
Posey	129	5	794,825
Vanderburgh	163	3	809,844
Restricted	999	20	12,087,345
<b>Total for Indiana</b>		<b>66</b>	<b>43,494,669</b>

**Kansas**

<b>County Name</b>	<b>Code</b>	<b>No. Farms</b>	<b>Total Pounds</b>
Anderson	3	3	104,034
Douglas	45	3	230,074
Franklin	59	6	160,059
Johnson	91	3	314,514
Labette	99	6	243,048
Montgomery	125	4	64,632
Neosho	133	4	288,359
Reno	155	8	421,956
Restricted	999	25	30,940,524
<b>Total for Kansas</b>		<b>62</b>	<b>32,767,200</b>

**Kentucky**

<b>County Name</b>	<b>Code</b>	<b>No. Farms</b>	<b>Total Pounds</b>
Adair	1	30	2,376,351
Allen	3	4	396,103
Barren	9	37	10,548,899
Breckinridge	27	3	218,587
Christian	47	46	3,205,535
Clinton	53	5	288,913
Daviess	59	3	413,678
Graves	83	6	408,306
Green	87	16	996,890



**Producer Milk By County/State  
(More Than Two Producers Per County)**

Federal Order No. 7

May 2013

<b>State &amp; County Name</b>	<b>County Code</b>	<b>No. Farms</b>	<b>Total Pounds</b>
Hardin	93	7	954,788
Hart	99	16	784,942
Larue	123	3	163,577
Logan	141	10	7,997,266
Metcalfe	169	30	1,750,847
Monroe	171	15	1,140,512
Russell	207	4	232,028
Simpson	213	3	540,532
Taylor	217	6	717,836
Todd	219	34	3,510,790
Trigg	221	7	398,829
Warren	227	24	5,227,778
Restricted	999	20	2,500,922
<b>Total for Kentucky</b>		<b>329</b>	<b>44,773,909</b>

**Louisiana**

<b>County Name</b>	<b>Code</b>	<b>No. Farms</b>	<b>Total Pounds</b>
De soto	31	4	949,901
Sabine	85	3	847,387
St. helena	91	10	1,949,356
Tangipahoa	105	63	8,788,989
Washington	117	34	5,250,883
Restricted	999	16	1,801,115
<b>Total for Louisiana</b>		<b>130</b>	<b>19,587,631</b>

**Maryland**

Restricted

**Michigan**

<b>County Name</b>	<b>Code</b>	<b>No. Farms</b>	<b>Total Pounds</b>
Restricted	999	9	8,286,218
<b>Total for Michigan</b>		<b>9</b>	<b>8,286,218</b>

**Mississippi**

<b>County Name</b>	<b>Code</b>	<b>No. Farms</b>	<b>Total Pounds</b>
Amite	5	4	697,614
Copiah	29	4	478,632
Jones	67	3	581,253
Lincoln	85	10	1,700,757
Marion	91	13	2,687,972
Marshall	93	3	377,491
Newton	101	3	595,892
Noxubee	103	3	591,576
Pike	113	8	1,278,935
Tate	137	3	1,841,824
Walthall	147	14	1,487,903
Restricted	999	26	5,084,595

**Producer Milk By County/State  
(More Than Two Producers Per County)**

Federal Order No. 7

May 2013

<b>State &amp; County Name</b>	<b>County Code</b>	<b>No. Farms</b>	<b>Total Pounds</b>
<b>Total for Mississippi</b>		94	17,404,444

**Missouri**

<b>County Name</b>	<b>Code</b>	<b>No. Farms</b>	<b>Total Pounds</b>
Barry	9	23	2,537,406
Barton	11	3	1,400,444
Bates	13	7	416,661
Benton	15	6	399,100
Cape girardeau	31	8	1,779,064
Cass	37	3	488,661
Christian	43	18	1,584,653
Dade	57	5	775,289
Dallas	59	33	3,460,358
Douglas	67	38	3,588,132
Greene	77	16	2,122,986
Henry	83	3	367,117
Hickory	85	4	621,206
Howell	91	15	844,864
Jasper	97	10	1,564,709
Jefferson	99	3	434,972
Laclede	105	37	3,595,252
Lawrence	109	46	11,045,890
Mcdonald	119	4	839,309
Moniteau	135	3	93,165
Newton	145	15	2,148,560
Oregon	149	5	243,490
Ozark	153	9	583,634
Perry	157	5	571,607
Polk	167	32	5,793,266
Stone	209	18	1,648,778
Taney	213	3	184,905
Texas	215	45	4,120,477
Vernon	217	4	3,167,684
Webster	225	55	5,231,410
Wright	229	97	10,168,028
Restricted	999	21	3,228,477
<b>Total for Missouri</b>		594	75,049,554

**New Mexico**

Restricted

**North Carolina**

Restricted

**Ohio**

<b>County Name</b>	<b>Code</b>	<b>No. Farms</b>	<b>Total Pounds</b>
Adams	1	5	62,333
Ashland	5	3	48,121

**Producer Milk By County/State  
(More Than Two Producers Per County)**

Federal Order No. 7

May 2013

<b>State &amp; County Name</b>	<b>County Code</b>	<b>No. Farms</b>	<b>Total Pounds</b>
Fairfield	45	3	110,353
Geauga	55	8	12,636
Highland	71	11	256,048
Holmes	75	32	402,748
Logan	91	12	749,540
Mercer	107	4	23,883
Richland	139	11	123,796
Shelby	149	3	617,635
Stark	151	7	155,902
Tuscarawas	157	15	457,871
Wayne	169	20	218,036
Restricted	999	24	10,352,592
<b>Total for Ohio</b>		<b>158</b>	<b>13,591,494</b>

**Oklahoma**

<b>County Name</b>	<b>Code</b>	<b>No. Farms</b>	<b>Total Pounds</b>
Adair	1	16	3,022,788
Bryan	13	4	1,426,850
Cherokee	21	4	992,196
Coal	29	4	19,392
Craig	35	5	394,492
Delaware	41	8	1,370,686
Mayes	97	24	3,139,359
Rogers	131	4	309,206
Restricted	999	7	672,838
<b>Total for Oklahoma</b>		<b>76</b>	<b>11,347,807</b>

**Pennsylvania**

Restricted

**South Carolina**

Restricted

**Tennessee**

<b>County Name</b>	<b>Code</b>	<b>No. Farms</b>	<b>Total Pounds</b>
Bedford	3	6	1,580,713
Blount	9	3	103,992
Cannon	15	6	332,848
Cocke	29	3	256,512
Coffee	31	4	858,269
Cumberland	35	5	1,199,635
Fentress	49	3	169,379
Franklin	51	6	545,448
Gibson	53	3	425,814
Giles	55	4	523,405
Greene	59	7	300,829
Henry	79	9	2,205,164
Lawrence	99	10	1,538,258

**Producer Milk By County/State  
(More Than Two Producers Per County)**

Federal Order No. 7

May 2013

<b>State &amp; County Name</b>	<b>County Code</b>	<b>No. Farms</b>	<b>Total Pounds</b>
Lincoln	103	5	653,203
Loudon	105	7	354,949
Marshall	117	21	2,621,590
Maury	119	9	1,920,359
Monroe	123	10	353,677
Putnam	141	5	941,434
Robertson	147	10	1,833,864
Rutherford	149	5	342,975
Smith	159	3	271,185
Sumner	165	7	1,065,409
Warren	177	15	1,500,445
Weakley	183	3	62,931
White	185	9	1,901,525
Williamson	187	3	549,169
Restricted	999	30	2,869,865
<b>Total for Tennessee</b>		<b>211</b>	<b>27,282,846</b>

**Texas**

<b>County Name</b>	<b>Code</b>	<b>No. Farms</b>	<b>Total Pounds</b>
Cherokee	73	4	1,515,426
Deaf smith	117	5	28,389,746
Franklin	159	13	4,781,643
Hopkins	223	60	20,433,707
Nacogdoches	347	3	834,771
Rains	379	7	1,505,481
Upshur	459	10	3,243,275
Van zandt	467	9	3,571,349
Wood	499	21	4,721,578
Restricted	999	16	5,680,877
<b>Total for Texas</b>		<b>148</b>	<b>74,677,853</b>

**Virginia**

Restricted

**Wisconsin**

Restricted

**Producer Milk By County/State  
(More Than Two Producers Per County)**

Federal Order No. 7

December 2013

State & County Name	County Code	No. Farms	Total Pounds
<b>Alabama</b>			
<b>County Name</b>	<b>Code</b>	<b>No. Farms</b>	<b>Total Pounds</b>
Cullman	43	5	919,483
Morgan	103	3	1,824,520
Restricted	999	32	5,734,450
<b>Total for Alabama</b>		<b>40</b>	<b>8,478,453</b>

**Arkansas**

Restricted

**Florida**

County Name	Code	No. Farms	Total Pounds
Jackson	63	4	580,973
Jefferson	65	3	4,215,339
Washington	133	4	218,467
Restricted	999	6	4,348,154
<b>Total for Florida</b>		<b>17</b>	<b>9,362,933</b>

**Georgia**

County Name	Code	No. Farms	Total Pounds
Brooks	27	4	4,732,064
Burke	33	6	839,114
Greene	133	11	5,040,210
Hall	139	5	431,645
Hart	147	3	636,213
Houston	153	3	513,017
Jasper	159	3	408,192
Jefferson	163	6	194,752
Macon	193	32	22,204,875
Morgan	211	16	4,000,091
Putnam	237	17	5,335,147
Taliaferro	265	4	617,915
Tift	277	3	1,098,085
Wilkes	317	3	263,542
Restricted	999	65	20,800,815
<b>Total for Georgia</b>		<b>181</b>	<b>67,115,677</b>

**Illinois**

County Name	Code	No. Farms	Total Pounds
Randolph	157	4	2,100,890
St. clair	163	5	520,088
Washington	189	15	5,816,765
Restricted	999	12	2,836,610
<b>Total for Illinois</b>		<b>36</b>	<b>11,274,353</b>

**Indiana**

County Name	Code	No. Farms	Total Pounds
Dubois	37	4	3,016,727

**Producer Milk By County/State  
(More Than Two Producers Per County)**

Federal Order No. 7

December 2013

<b>State &amp; County Name</b>	<b>County Code</b>	<b>No. Farms</b>	<b>Total Pounds</b>
Gibson	51	8	5,297,726
Jasper	73	4	7,163,828
Lagrange	87	13	27,810
La porte	91	6	1,485,115
Newton	111	7	15,842,497
Noble	113	7	3,716,865
Posey	129	5	769,588
Vanderburgh	163	3	882,770
Restricted	999	19	8,825,538
<b>Total for Indiana</b>		<b>76</b>	<b>47,028,464</b>

**Kansas**

<b>County Name</b>	<b>Code</b>	<b>No. Farms</b>	<b>Total Pounds</b>
Douglas	45	4	255,656
Franklin	59	4	340,407
Gray	69	3	15,768,581
Labette	99	6	123,833
Marion	115	3	271,302
Miami	121	4	193,128
Neosho	133	3	113,556
Reno	155	7	141,158
Restricted	999	16	19,541,938
<b>Total for Kansas</b>		<b>50</b>	<b>36,749,559</b>

**Kentucky**

<b>County Name</b>	<b>Code</b>	<b>No. Farms</b>	<b>Total Pounds</b>
Adair	1	15	2,417,104
Allen	3	4	357,600
Barren	9	30	8,768,716
Breckinridge	27	3	223,399
Christian	47	71	3,853,379
Graves	83	6	294,832
Green	87	12	1,289,316
Hardin	93	6	717,057
Hart	99	5	305,355
Logan	141	10	9,019,642
Metcalfe	169	10	888,219
Monroe	171	12	820,572
Taylor	217	13	1,987,378
Todd	219	36	3,595,079
Trigg	221	11	281,997
Warren	227	14	4,585,599
Restricted	999	24	3,373,078
<b>Total for Kentucky</b>		<b>282</b>	<b>42,778,322</b>

**Louisiana**

<b>County Name</b>	<b>Code</b>	<b>No. Farms</b>	<b>Total Pounds</b>
De soto	31	4	947,670
Sabine	85	3	594,571
St. helena	91	9	1,660,091

**Producer Milk By County/State  
(More Than Two Producers Per County)**

Federal Order No. 7

December 2013

<b>State &amp; County Name</b>	<b>County Code</b>	<b>No. Farms</b>	<b>Total Pounds</b>
Tangipahoa	105	62	7,620,194
Washington	117	32	4,492,907
Restricted	999	15	1,614,935
<b>Total for Louisiana</b>		<b>125</b>	<b>16,930,368</b>

**Maryland**

Restricted

**Michigan**

<b>County Name</b>	<b>Code</b>	<b>No. Farms</b>	<b>Total Pounds</b>
Allegan	5	4	2,415,912
Restricted	999	9	5,059,945
<b>Total for Michigan</b>		<b>13</b>	<b>7,475,857</b>

**Mississippi**

<b>County Name</b>	<b>Code</b>	<b>No. Farms</b>	<b>Total Pounds</b>
Amite	5	4	552,233
Jones	67	3	433,836
Lincoln	85	10	1,326,266
Marion	91	13	1,951,455
Marshall	93	3	359,350
Newton	101	3	577,864
Noxubee	103	3	560,814
Pike	113	8	1,084,030
Tate	137	3	1,889,039
Walthall	147	12	1,263,965
Restricted	999	28	5,950,958
<b>Total for Mississippi</b>		<b>90</b>	<b>15,949,810</b>

**Missouri**

<b>County Name</b>	<b>Code</b>	<b>No. Farms</b>	<b>Total Pounds</b>
Barry	9	19	1,829,595
Barton	11	3	1,053,753
Bates	13	5	261,169
Benton	15	7	533,343
Cape girardeau	31	7	1,805,178
Cass	37	3	283,434
Cedar	39	3	279,731
Christian	43	18	884,763
Dade	57	4	388,152
Dallas	59	31	2,950,723
Douglas	67	37	3,035,198
Greene	77	15	1,443,152
Henry	83	3	361,656
Hickory	85	4	567,299
Howell	91	18	906,683
Jasper	97	10	760,001
Jefferson	99	3	232,886
Laclede	105	36	2,938,436

**Producer Milk By County/State  
(More Than Two Producers Per County)**

Federal Order No. 7

December 2013

<b>State &amp; County Name</b>	<b>County Code</b>	<b>No. Farms</b>	<b>Total Pounds</b>
Lawrence	109	41	4,466,758
Mcdonald	119	4	477,226
Newton	145	14	1,028,908
Oregon	149	6	307,736
Ozark	153	9	698,919
Perry	157	4	671,190
Polk	167	29	5,236,571
Stone	209	18	1,445,919
Taney	213	3	171,130
Texas	215	38	3,268,094
Vernon	217	4	1,062,925
Webster	225	53	4,851,783
Wright	229	88	8,289,246
Restricted	999	19	2,165,998
<b>Total for Missouri</b>		<b>556</b>	<b>54,657,555</b>

**New Mexico**

<b>County Name</b>	<b>Code</b>	<b>No. Farms</b>	<b>Total Pounds</b>
Curry	9	4	6,382,034
Roosevelt	41	3	4,284,174
<b>Total for New Mexico</b>		<b>7</b>	<b>10,666,208</b>

**North Carolina**

Restricted

**Ohio**

<b>County Name</b>	<b>Code</b>	<b>No. Farms</b>	<b>Total Pounds</b>
Adams	1	6	26,329
Ashtabula	7	3	11,650
Coshocton	31	3	5,948
Fairfield	45	3	21,129
Geauga	55	6	15,645
Highland	71	11	54,411
Holmes	75	31	81,669
Logan	91	8	137,054
Mercer	107	5	114,513
Richland	139	4	28,063
Stark	151	7	59,223
Tuscarawas	157	11	104,702
Wayne	169	21	125,123
Restricted	999	24	16,965,968
<b>Total for Ohio</b>		<b>143</b>	<b>17,751,427</b>

**Oklahoma**

<b>County Name</b>	<b>Code</b>	<b>No. Farms</b>	<b>Total Pounds</b>
Adair	1	15	2,285,568
Bryan	13	4	1,450,401
Cherokee	21	4	820,054
Coal	29	4	33,731



**Producer Milk By County/State  
(More Than Two Producers Per County)**

Federal Order No. 7

December 2013

<b>State &amp; County Name</b>	<b>County Code</b>	<b>No. Farms</b>	<b>Total Pounds</b>
Craig	35	4	281,284
Delaware	41	9	1,085,435
Mayes	97	22	2,744,949
Rogers	131	5	343,494
Restricted	999	7	571,454
<b>Total for Oklahoma</b>		<b>74</b>	<b>9,616,370</b>

**Pennsylvania**

Restricted

**South Carolina**

<b>County Name</b>	<b>Code</b>	<b>No. Farms</b>	<b>Total Pounds</b>
Restricted	999	11	1,730,900
<b>Total for South Carolina</b>		<b>11</b>	<b>1,730,900</b>

**Tennessee**

<b>County Name</b>	<b>Code</b>	<b>No. Farms</b>	<b>Total Pounds</b>
Bedford	3	6	1,466,521
Blount	9	4	39,433
Cannon	15	5	91,300
Coffee	31	4	567,577
Cumberland	35	3	295,127
Fentress	49	3	165,321
Franklin	51	4	457,664
Gibson	53	3	430,151
Giles	55	4	511,139
Greene	59	7	280,697
Henry	79	9	2,165,044
Lawrence	99	9	1,486,069
Lincoln	103	4	424,851
Loudon	105	5	75,584
Marshall	117	22	2,790,658
Mauy	119	9	1,850,258
Monroe	123	4	170,502
Overton	133	8	278,396
Putnam	141	5	799,249
Robertson	147	7	1,659,404
Rutherford	149	7	415,974
Sumner	165	7	1,151,920
Warren	177	11	1,371,670
White	185	6	1,504,153
Williamson	187	5	765,782
Restricted	999	34	2,719,902
<b>Total for Tennessee</b>		<b>195</b>	<b>23,934,346</b>

**Texas**

<b>County Name</b>	<b>Code</b>	<b>No. Farms</b>	<b>Total Pounds</b>
Bailey	17	3	11,598,579
Cherokee	73	4	1,377,638

**Producer Milk By County/State  
(More Than Two Producers Per County)**

Federal Order No. 7  
December 2013

<b>State &amp; County Name</b>	<b>County Code</b>	<b>No. Farms</b>	<b>Total Pounds</b>
Deaf smith	117	4	16,780,326
Franklin	159	11	4,780,371
Hopkins	223	60	22,966,341
Nacogdoches	347	3	709,516
Parmer	369	3	2,951,960
Rains	379	8	1,667,303
Upshur	459	12	3,158,918
Van zandt	467	9	3,083,056
Wood	499	17	3,469,193
Restricted	999	14	6,145,372
<b>Total for Texas</b>		<b>148</b>	<b>78,688,573</b>

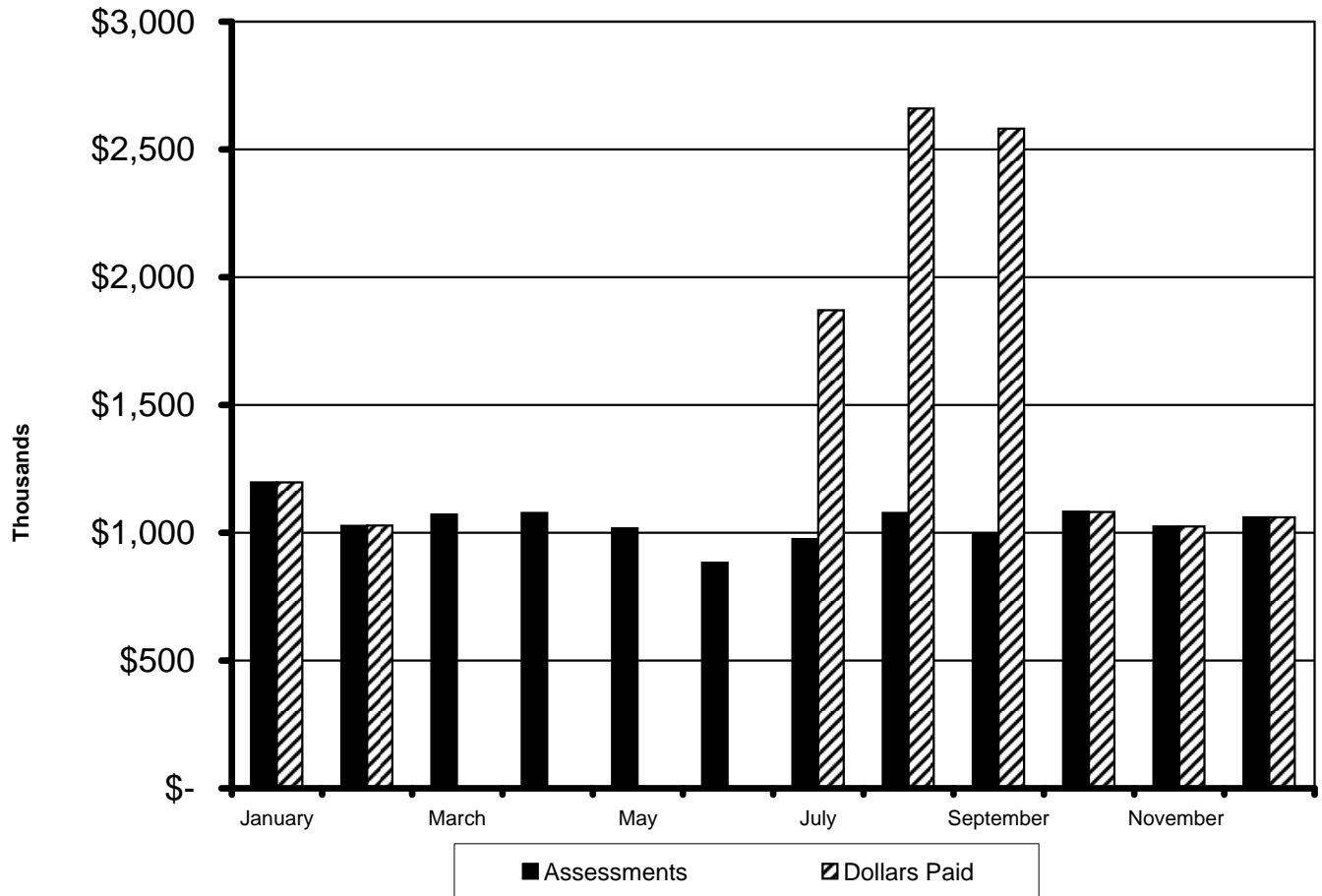
**Virginia**  
Restricted

**Wisconsin**  
Restricted

**SOUTHEAST MARKETING AREA  
FEDERAL ORDER NO. 7  
TRANSPORTATION CREDIT BALANCING FUND**

<b>2013</b>	<b>Assessments</b>	<b>Pounds Claimed</b>	<b>Dollars Claimed</b>	<b>Dollars Paid</b>	<b>Proration</b>
Beginning Balance	\$0.00				
January	\$1,196,532.81	128,628,913	\$2,231,694.03	\$1,196,717.96	53.62%
February	\$1,027,656.29	91,101,402	\$1,509,878.71	\$1,028,457.36	68.12%
March	\$1,071,361.76	N/A	N/A	N/A	N/A
April	\$1,077,430.52	N/A	N/A	N/A	N/A
May	\$1,016,652.40	N/A	N/A	N/A	N/A
June	\$882,963.71	N/A	N/A	N/A	N/A
July	\$974,899.38	110,927,991	\$1,870,379.03	\$1,870,379.04	100.00%
August	\$1,078,171.58	160,206,574	\$2,660,236.95	\$2,660,236.95	100.00%
September	\$996,055.62	162,623,294	\$2,909,405.00	\$2,581,746.73	88.74%
October	\$1,082,826.96	170,676,028	\$2,963,117.92	\$1,080,957.39	36.48%
November	\$1,024,595.03	122,869,225	\$2,132,848.78	\$1,024,584.44	48.04%
December	\$1,059,742.98	108,948,497	\$1,786,986.72	\$1,059,742.97	59.30%
<b>TOTAL</b>	<b>\$12,488,889.04</b>	<b>1,055,981,924</b>	<b>\$18,064,547.14</b>	<b>\$12,502,822.84</b>	<b>69.21%</b>

Difference between **Assessments** and **Dollars Paid** is accounted for by ending balance, accrued interest and audit adjustments.



**SOUTHEAST MARKETING AREA  
FEDERAL ORDER NO. 7  
2013 POOL HANDLERS**

**Fluid Milk Distributing Pool Plants §1007.7(a)(b)(e)**

	<b>J</b>	<b>F</b>	<b>M</b>	<b>A</b>	<b>M</b>	<b>J</b>	<b>J</b>	<b>A</b>	<b>S</b>	<b>O</b>	<b>N</b>	<b>D</b>
Barber Pure Milk Company Birmingham, Alabama	X	X	X	X	X	X	X	X	X	X	X	X
Borden Dairy Company Baker, Louisiana	X	X	X	X	X	X	X	X	X	X	X	
Borden Dairy Company Cowarts, Alabama	X	X	X	X	X	X	X	X	X	X	X	X
Borden Dairy Company Hattiesburg, Mississippi	X	X	X	X	X	X	X	X	X	X	X	X
Borden Dairy Company Lafayette, Louisiana	X	X	X	X	X	X	X	X	X	X	X	X
Brown's Dairy New Orleans, Louisiana	X	X	X	X	X	X	X	X	X	X	X	X
Centennial Farms Dairy Atlanta, Georgia	X	X	X	X	X	X	X	X	X	X	X	X
Country Delite Farms Nashville, Tennessee	X	X	X	X	X	X	X	X	X	X	X	X
Foremost Dairy, Inc. Shreveport, Louisiana	X	X	X	X								
Heritage Farms Dairy Murfreesboro, Tennessee	X	X	X	X	X	X	X	X	X	X	X	X
Hiland Dairy Fayetteville, Arkansas	X	X	X	X	X	X	X	X	X	X	X	X
Hiland Dairy Fort Smith, Arkansas	X	X	X	X	X	X	X	X	X	X	X	X
Hiland Dairy Little Rock, Arkansas	X	X	X	X	X	X	X	X	X	X	X	X
Hiland Dairy Springfield, Missouri	X	X	X	X	X	X	X	X	X	X	X	X
Kleinpeter Dairy Farms Baton Rouge, Louisiana	X	X	X	X	X	X	X	X	X	X	X	X

	J	F	M	A	M	J	J	A	S	O	N	D
LuVel Dairy Products, Inc. Kosciusko, Mississippi	X	X	X	X	X	X	X	X	X	X	X	X
Mayfield Dairy Farms, Inc. Braselton, Georgia	X	X	X	X	X	X	X	X	X	X	X	X
Memory Lane Dairy Fordland, Missouri	X	X	X	X	X	X	X	X	X	X	X	X
Publix Supermarkets, Inc. Atlanta, Georgia	X	X	X	X	X	X	X	X	X	X	X	X
Purity Dairies, Inc. Nashville, Tennessee	X	X	X	X	X	X	X	X	X	X	X	X
Saputo Dairy Foods Murray, Kentucky	X	X	X	X	X	X	X	X	X	X		X
Sparkmans Cream Valley Moultrie, Georgia			X		X		X			X		X
Sunshine State Dairy Farms, LLC Hammond, Louisiana	X	X	X	X	X	X	X	X	X	X	X	X
Turner Holdings, LLC Fulton, Kentucky	X	X	X	X	X	X	X	X	X	X	X	X
Turner Holdings, LLC Memphis, Tennessee	X	X	X	X	X	X	X	X	X	X	X	X

**Pool Supply Plants §1007.7(c) and/or §1007.7(d)**

Dairy Farmers of America, Inc. Cabool, Missouri	X	X	X	X	X	X	X	X	X	X	X	X
Dairy Farmers of America, Inc. Monet, Missouri	X	X	X	X	X	X	X	X	X			
SMI Ultra Filtration Plant Baconton, Georgia				X	X	X	X					

J	F	M	A	M	J	J	A	S	O	N	D
---	---	---	---	---	---	---	---	---	---	---	---

**Cooperatives Qualifying as Pool Handlers §1000.9(c)**

Cobblestone Milk Cooperative Chatham, Virginia	X	X	X	X	X	X	X	X	X	X	X	X
Continental Dairy Artesia, New Mexico	X	X	X	X	X	X	X	X	X	X	X	X
Cooperative MPA Blackstone, Virginia						X						
Dairy Farmers of America, Inc. Kansas City, Missouri	X	X	X	X	X	X	X	X	X	X	X	X
Dairy Marketing Services, LLC Syracuse, New York							X	X				
Dairymens Marketing Cooperative Mountain Grove, Missouri	X	X	X	X	X	X	X	X	X	X	X	X
Foremost Farms USA Baraboo, Wisconsin	X	X	X	X	X	X						X
Lancaster Organic Farmers Coop Bird in Hand, Pennsylvania												X
LANCO-Pennland Quality Milk Prods. Hagerstown, Maryland	X	X	X	X	X	X	X	X	X	X	X	X
Lone Star Milk Producers, Inc. Windthorst, Texas	X	X	X	X	X	X	X	X	X	X	X	X
Maryland/Virginia Milk Producers Reston, Virginia	X	X	X	X	X	X	X	X	X	X	X	X
Michigan Milk Producers Novi, Michigan	X	X		X	X							X
National Farmers Organization Minster, Ohio	X	X	X	X	X	X	X	X	X	X	X	X
Prairie Farms Dairy, Inc. Carlinville, Illinois								X	X	X	X	X
Premier Milk, Inc. Ocala, Florida	X	X	X	X	X	X	X	X	X	X	X	X
Select Milk Producers Artesia, New Mexico	X	X	X	X	X	X	X	X	X	X	X	X
Southeast Milk, Inc. Bellevue, Florida	X	X	X	X	X	X	X	X	X	X	X	X

**SOUTHEAST MARKETING AREA  
FEDERAL ORDER NO. 7  
2013 NONPOOL PLANTS WITH ROUTE DISPOSITION IN THE AREA**

**Other Order Plants §1000.8(a)**

	J	F	M	A	M	J	J	A	S	O	N	D
<b>Federal Order # 1</b>												
Farmland Dairies Inc. Wallington, New Jersey	X	X	X	X	X	X	X	X	X	X	X	X
H.P. Hood, Inc. Oneida, New York	X	X	X	X	X	X	X	X	X	X	X	X
H.P. Hood, Inc. Winchester, Virginia	X	X	X	X	X	X	X	X	X	X	X	X
Saputo Dairy Foods Delhi, New York						X	X	X	X	X	X	X
Steuben Foods Elma, New York	X	X	X	X	X	X	X	X	X	X	X	X

<b>Federal Order #5</b>												
Borden Dairy Company Charleston, South Carolina	X	X	X	X	X	X	X	X	X	X	X	X
Dean Foods Louisville, Kentucky	X	X	X	X	X	X	X	X	X	X	X	X
Flav-O-Rich, Inc. London, Kentucky	X	X	X	X	X	X	X	X	X	X	X	X
Homestead Creamery Wirtz, Virginia											X	X
Land-O-Sun Spartanburg, South Carolina	X	X	X	X	X	X	X	X	X	X	X	X
Mayfield Dairy Farms, Inc. Athens, Tennessee	X	X	X	X	X	X	X	X	X	X	X	X
Milkco, Inc. Asheville, North Carolina	X	X	X	X	X	X	X	X	X	X	X	X
Prairie Farms Dairy Somerset, Kentucky	X	X	X	X	X	X	X	X	X	X	X	X
Prairie Farms Dairy Holland, Indiana		X	X	X	X	X	X	X	X	X	X	X

	J	F	M	A	M	J	J	A	S	O	N	D
U.C. Milk Company Madisonville, Kentucky	X	X	X	X	X	X	X	X	X	X	X	
Whitewave Foods Mount Crawford, Virginia	X	X	X	X	X							

**Federal Order #6**

Gustafsons, LLC Green Cove Springs, Florida	X	X	X	X	X	X	X	X	X			
Sunshine State Dairy Farms, LLC Plant City, Florida									X	X	X	X

**Federal Order #30**

Agropur, Inc. Maplewood, Minnesota	X	X	X	X	X	X	X	X	X	X	X	X
Dean Foods Woodbury, Minnesota	X	X	X	X	X	X	X	X	X	X	X	X
Kohler Mix Specialty White Bear Lake, Minnesota	X	X	X	X						X	X	X

**Federal Order #32**

Aurora Organic Dairy Platteville, Colorado	X	X	X	X	X	X	X	X	X	X	X	X
Borden Dairy, Inc. Tulsa, Oklahoma	X	X	X	X	X	X	X	X	X	X	X	X
Chester Dairy Company Chester, Illinois	X	X	X	X	X	X	X	X	X	X	X	X
Farmers All Natural Creamery Wellman, IA								X		X	X	
Hiland Dairy Chandler, Oklahoma	X	X	X	X	X	X	X	X	X	X	X	X
Hiland Dairy Kansas City, Missouri			X	X	X	X	X	X	X	X		
Jackson Dairy Hutchinson, Kansas	X	X	X	X	X	X	X	X	X	X	X	X
Pet O'Fallon, LLC O'Fallon, Illinois	X	X	X	X	X	X	X	X	X	X	X	X
Prairie Farms Dairy, Inc. Carlinville, Illinois	X	X	X	X	X	X	X	X	X	X	X	X
Prairie Farms Dairy, Inc. Granite City, Illinois	X	X	X	X	X	X	X	X	X	X	X	X



Prairie Farms Dairy, Inc.  
Hazelwood, Missouri

J	F	M	A	M	J	J	A	S	O	N	D
X	X	X	X	X	X	X	X	X	X	X	X
X	X	X	X	X	X	X	X	X	X	X	X
X	X	X	X	X	X	X	X	X	X	X	X

Prairie Farms Dairy, Inc.  
Olney, Illinois

W.H. Braum, Inc.  
Tuttle, Oklahoma

**Federal Order #33**

Agropur, Inc.  
Wyoming, Michigan

Crossroads Farms  
Indianapolis, Indiana

Marburger Farm Dairy  
Evans City, Pennsylvania

Nestle USA, Inc.  
Anderson, Indiana

Superior Dairy, Inc.  
Canton, Ohio

X	X	X	X	X	X	X	X	X	X	X	X
X	X	X	X	X	X	X	X	X	X	X	X
X	X	X	X	X	X	X	X	X	X	X	X
X	X	X	X	X	X	X	X	X	X	X	X
X	X	X	X	X	X	X	X	X	X	X	X

**Federal Order #126**

Borden Dairy Company  
Dallas, Texas

Oak Farms Dairy-West  
Dallas, Texas

Plains Dairy Products  
Amarillo Texas

Promised Land Dairy, LLC  
Floresville, Texas

Saputo Dairy Foods  
Sulphur Springs, Texas

Southwest Dairy  
Tyler, Texas

Vandervoort Dairy  
Fort Worth, Texas

Whitewave Foods  
Dallas, Texas

X	X	X	X	X	X	X	X	X	X	X	X
X	X	X	X	X	X	X	X	X	X	X	X
X	X	X	X	X	X	X	X	X	X	X	X
X	X	X	X	X		X	X	X	X	X	X
X	X	X	X	X	X	X	X	X	X	X	X
X	X	X	X	X	X	X	X	X	X	X	X
		X	X	X	X	X	X	X	X	X	X

J	F	M	A	M	J	J	A	S	O	N	D
---	---	---	---	---	---	---	---	---	---	---	---

**Federal Order #131**

Shamrock Foods Company  
Phoenix, Arizona

X	X	X	X	X	X	X	X	X	X	X	X
---	---	---	---	---	---	---	---	---	---	---	---

**Exempt Distributing Plants \$1000.8(e)**

Alabama's Organic Milk  
Slocomb, Alabama

X	X	X	X	X	X	X	X	X	X	X	X
---	---	---	---	---	---	---	---	---	---	---	---

College of the Ozarks  
Lookout Point, Arkansas

X	X	X	X	X	X	X	X	X	X	X	X
---	---	---	---	---	---	---	---	---	---	---	---

Country Girls' Creamery  
Lumberton, Mississippi

X	X	X	X	X	X	X	X	X	X	X	X
---	---	---	---	---	---	---	---	---	---	---	---

Felician's Best Creamery  
Slaughter, Louisiana

X	X	X	X	X	X	X	X	X	X	X	X
---	---	---	---	---	---	---	---	---	---	---	---

Gammon Family Dairy  
Orlina, Tennessee

X	X	X	X	X	X	X	X	X	X	X	X
---	---	---	---	---	---	---	---	---	---	---	---

Hatcher Family Dairy  
College Grove, Tennessee

X	X	X	X	X	X	X	X	X	X	X	X
---	---	---	---	---	---	---	---	---	---	---	---

Jasper Products, LLC  
Joplin, Missouri

						X					
--	--	--	--	--	--	---	--	--	--	--	--

JD Country Milk  
Russellville, Kentucky

X	X	X	X	X	X	X	X	X	X	X	X
---	---	---	---	---	---	---	---	---	---	---	---

Mauthe's Dairy, LLC  
Folsom, Louisiana

X	X	X	X	X	X	X	X	X	X	X	X
---	---	---	---	---	---	---	---	---	---	---	---

Mauthe Farms, LLC  
McComb, Mississippi

								X	X	X	X
--	--	--	--	--	--	--	--	---	---	---	---

Middle Tennessee State University  
Murfreesboro, Tennessee

X	X	X	X	X	X	X	X	X	X	X	X
---	---	---	---	---	---	---	---	---	---	---	---

Mississippi State University  
Starkville, Mississippi

X	X	X	X	X	X	X	X	X	X	X	X
---	---	---	---	---	---	---	---	---	---	---	---

Mountain Fresh Creamery  
Clermont, Georgia

X	X	X	X	X	X	X	X	X	X	X	X
---	---	---	---	---	---	---	---	---	---	---	---

Newborn Milk Company  
Newborn, Georgia

X	X	X	X	X	X	X	X	X	X	X	X
---	---	---	---	---	---	---	---	---	---	---	---

Ozark Mountain Creamery  
Mountain Grove, Missouri

X	X	X	X	X	X	X	X	X	X	X	X
---	---	---	---	---	---	---	---	---	---	---	---

Rocking R Dairy  
Tylertown, Mississippi

X	X	X	X	X	X	X	X	X	X	X	X
---	---	---	---	---	---	---	---	---	---	---	---

	J	F	M	A	M	J	J	A	S	O	N	D
Rock Springs Dairy Bradford, Tennessee	X	X	X	X	X	X	X	X	X	X	X	X
Seven Doves Creamery Mena, Arkansas	X	X	X	X	X	X	X	X	X	X	X	X
Southern Swiss Dairy Waynesboro, Georgia	X	X	X	X	X	X	X	X	X	X	X	X
Sparkman's Cream Valley Moultrie, Georgia	X	X		X		X		X	X		X	
Wright Dairy, LLC Alexandria, Alabama	X	X	X	X	X	X	X	X	X	X	X	X

**Partially Regulated Distributing Plants §1000.8(c)**

Darigold, Inc. Boise, Idaho	X	X	X	X	X	X	X	X	X	X	X	X
Farmers All Natural Creamery Wellman, IA	X	X	X	X	X	X	X		X			X
Gossner Foods, Inc. Logan, Utah	X	X	X	X	X	X	X	X	X	X	X	X
Kohler Mix Specialties, Inc. White Bear Lake, Minnesota					X		X	X	X			
Saputo Dairy Foods Murray, Kentucky											X	
Stremicks Heritage Foods Santa Ana, California	X	X	X	X	X	X	X	X	X	X	X	X
Stremicks Heritage Foods Riverside, California	X	X	X	X	X	X						
Western Quality Foods Cedar City, Utah										X	X	
Whitewave Foods Mount Crawford, Virginia							X	X	X	X	X	X

**Producer-Handler Plants §1000.8(b)**

None